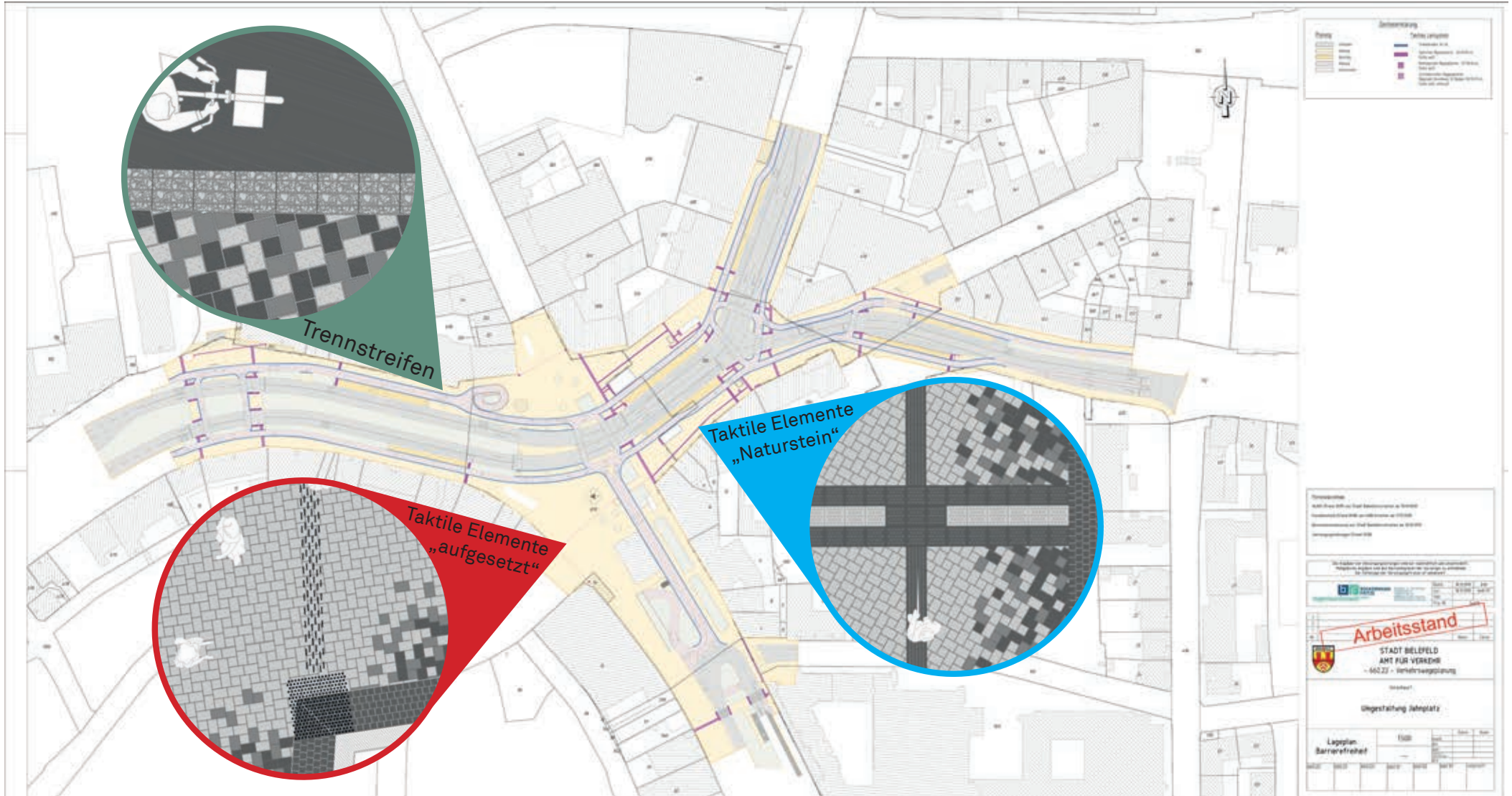
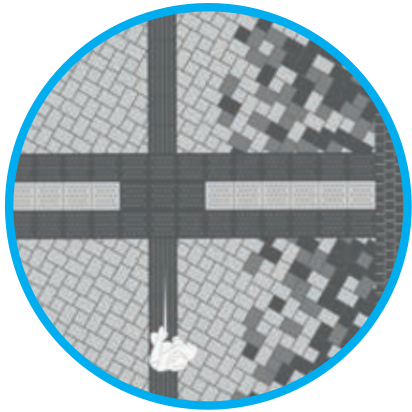


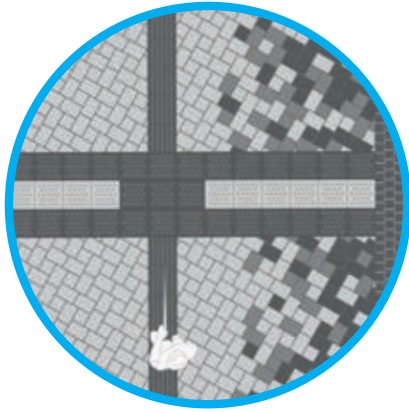
# Anlage 9 - Lageplan



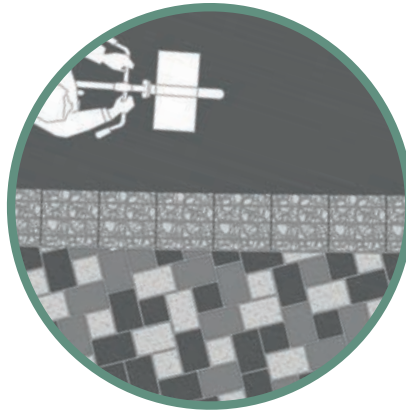
## Anlage 9 - Material



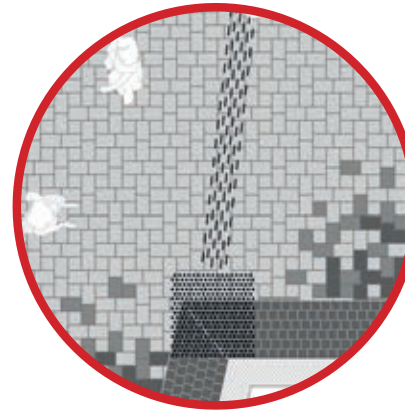
Taktile Elemente -  
„Naturstein - Rillen“



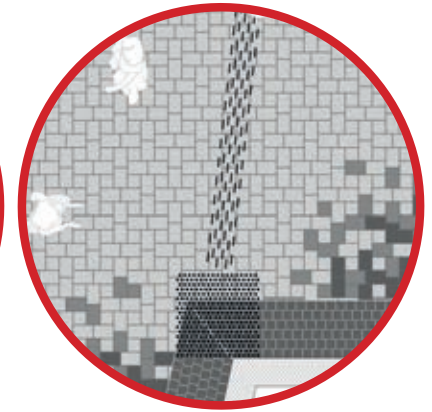
Taktile Elemente -  
„Naturstein - Noppen“



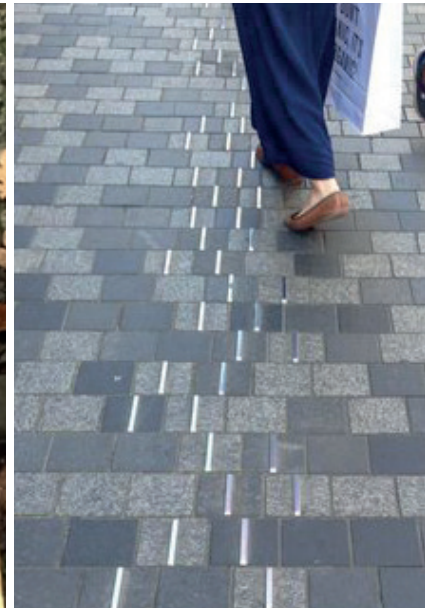
Trennstreifen



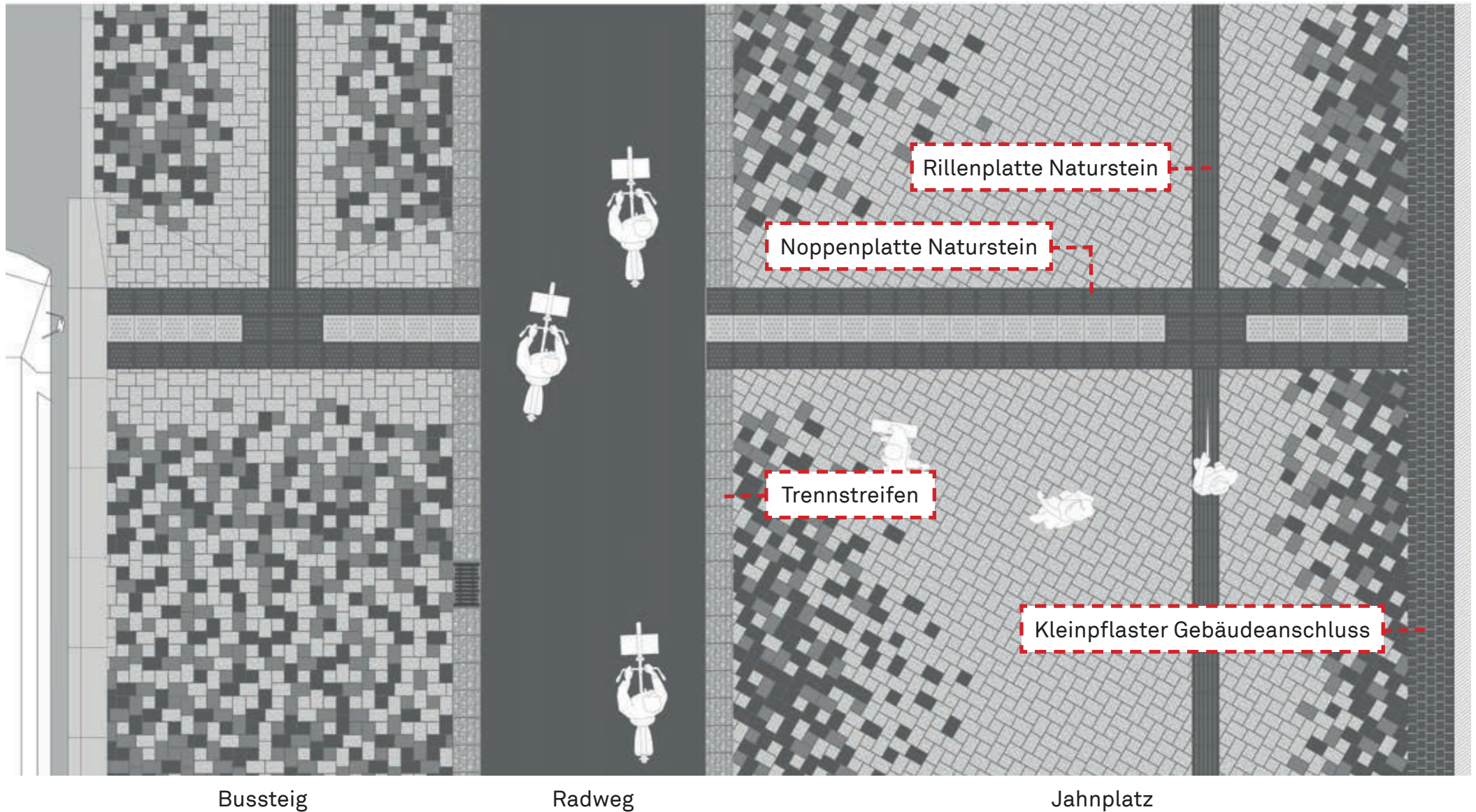
Kleinpflaster Gebäudeanschluss



Taktile Elemente - „aufgesetzt“



## Anlage 9 - Detailplan Bussteig



## Anlage 9 - Detailplan

