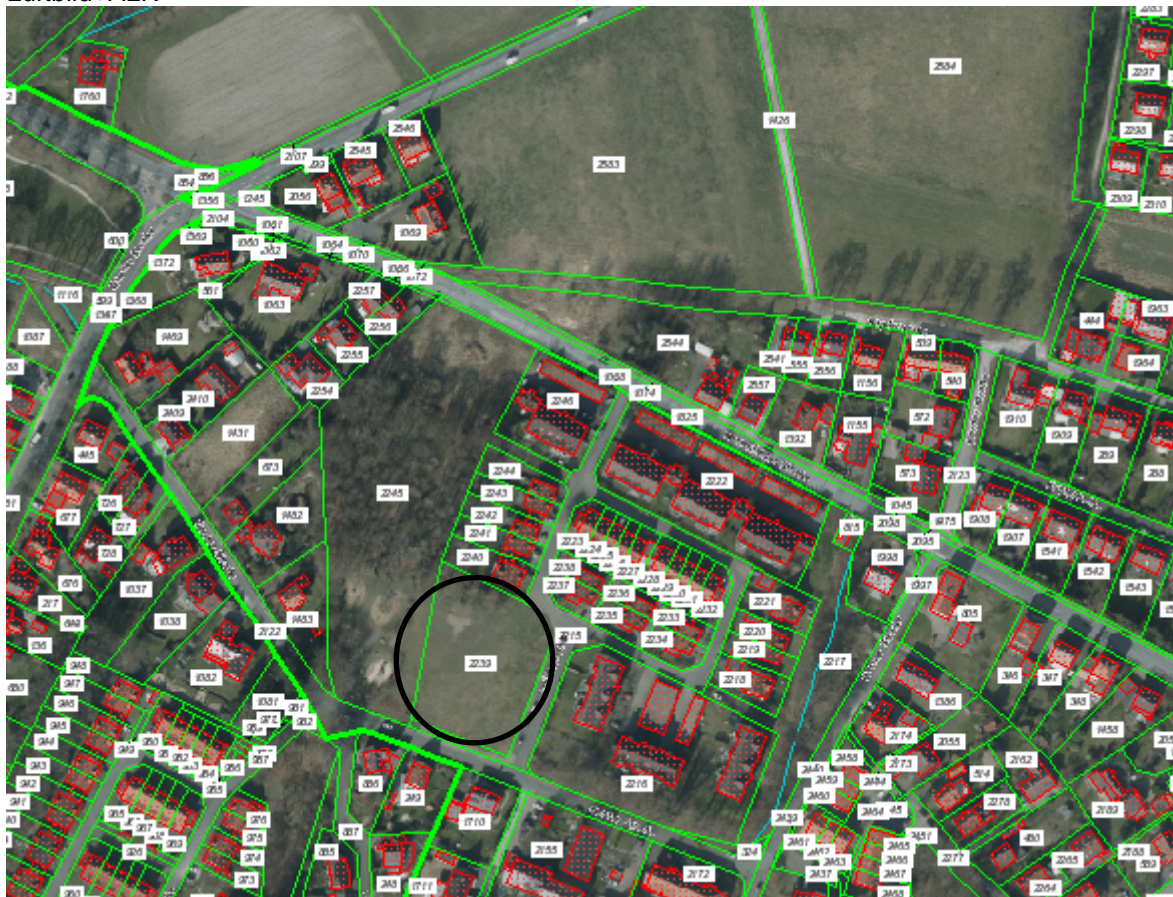


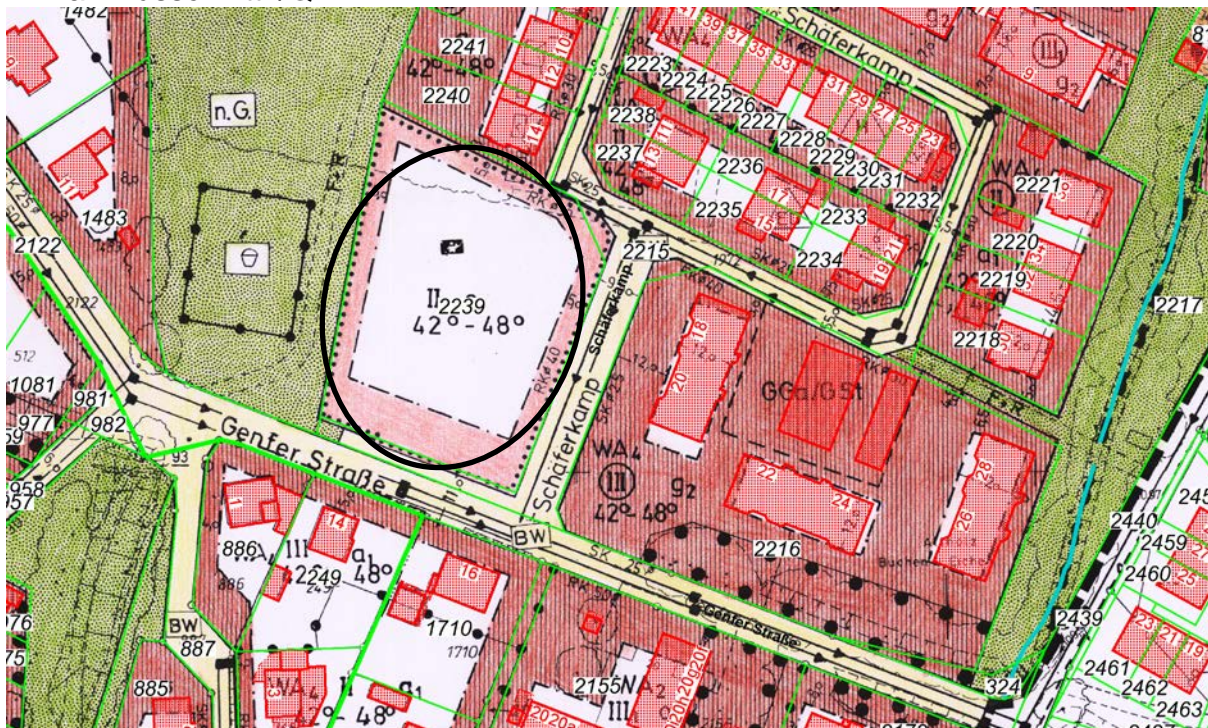
Nr. 10

Bereich Schäferkamp / Quelle / Flur 1 Flst. 2239

Luftbild+ALK



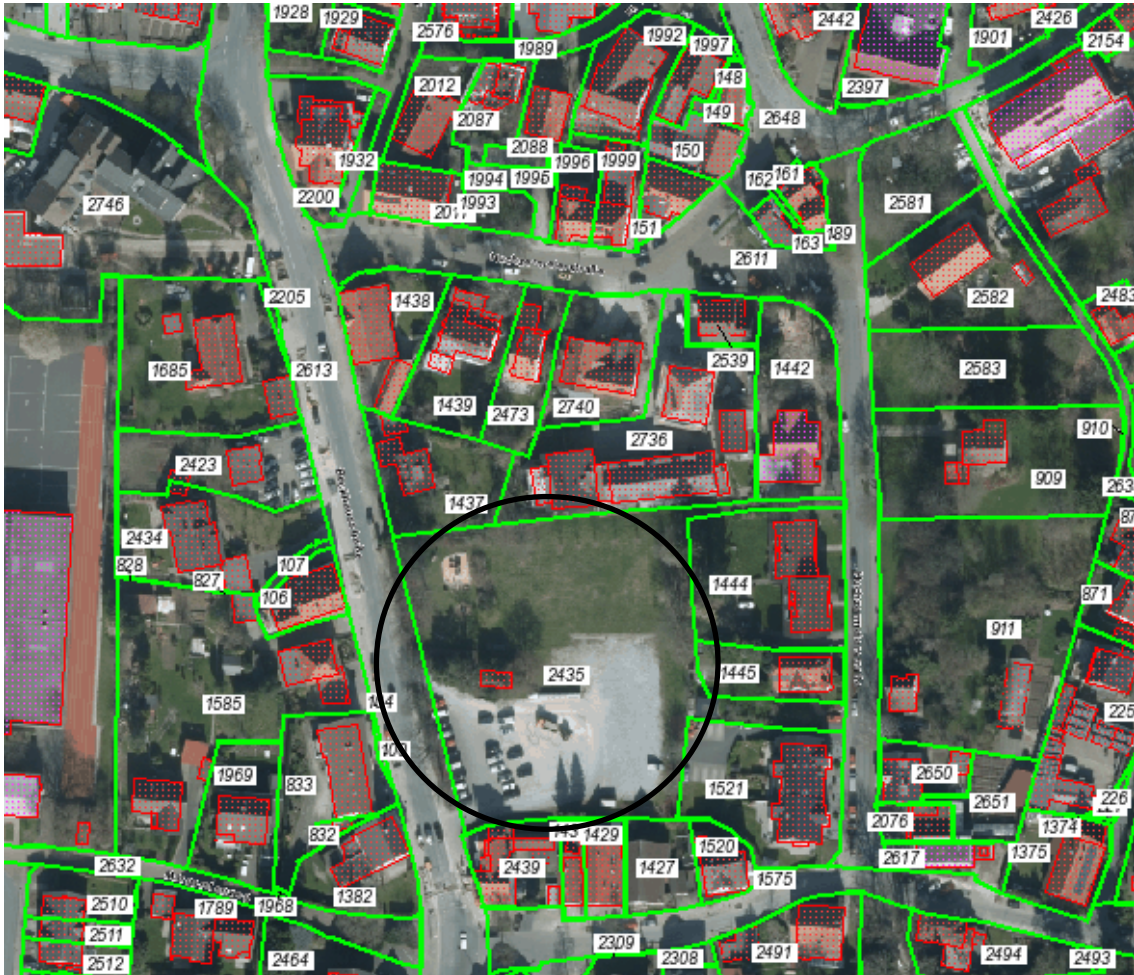
B-Plan-Ausschnitt I/Q 12 TP B+ALK



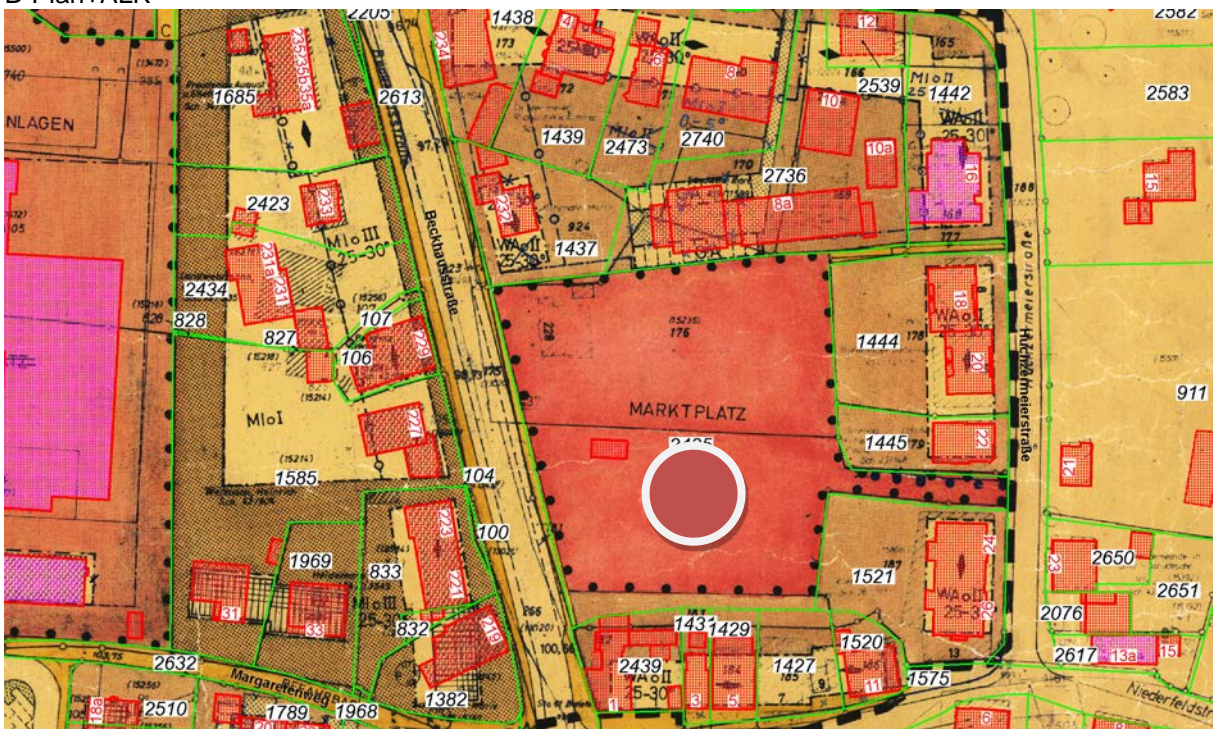
Nr. 13

Bereich Marktplatz Schildesche / Gemarkung Bi, Flur 53, Flst. 2435

Luftbild+ALK

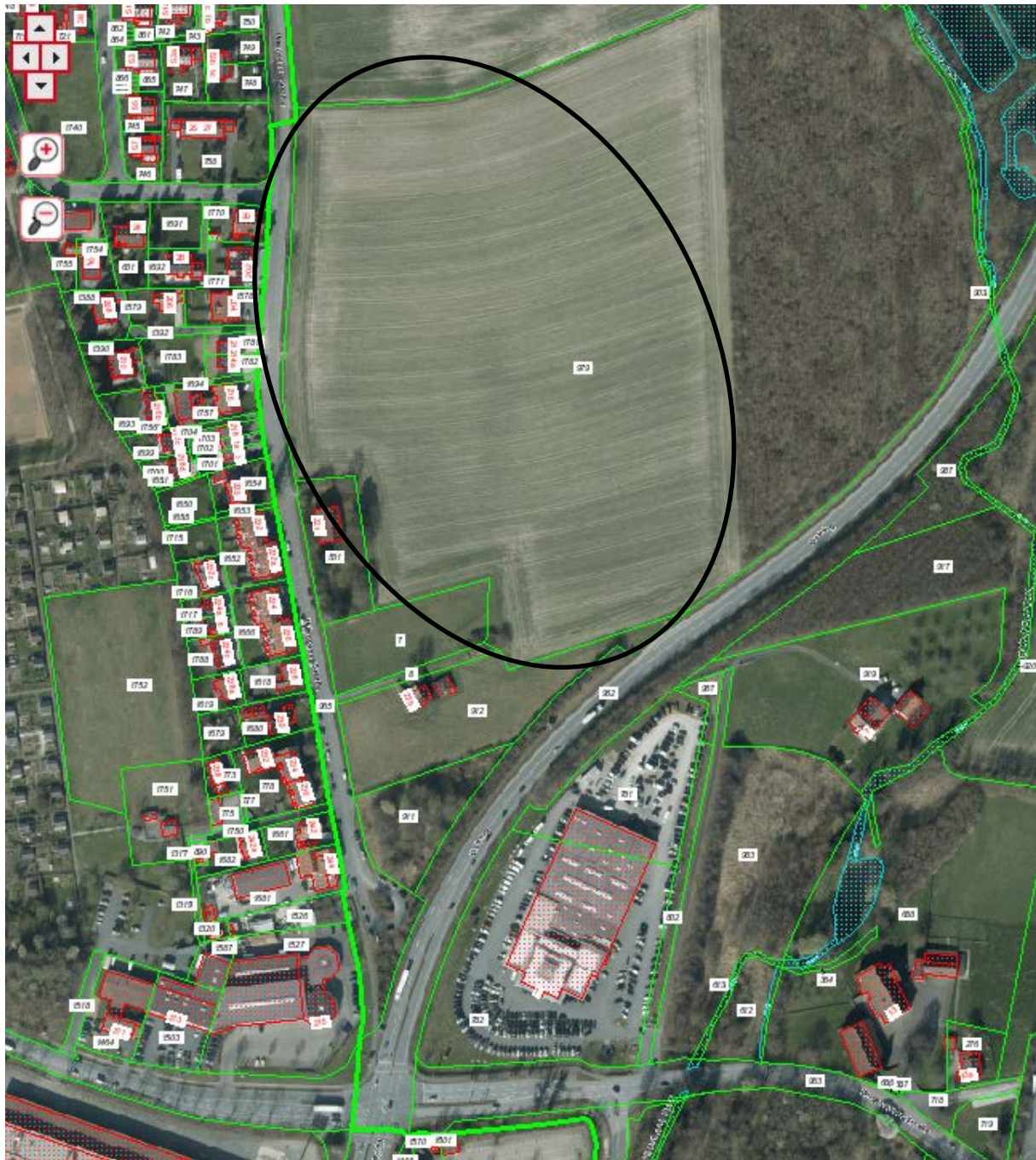


B-Plan+ALK



Nr. 26 Projekt „Amerkamp“ (östl. Hillegosser Straße / nördl. u. westl. Ostring)

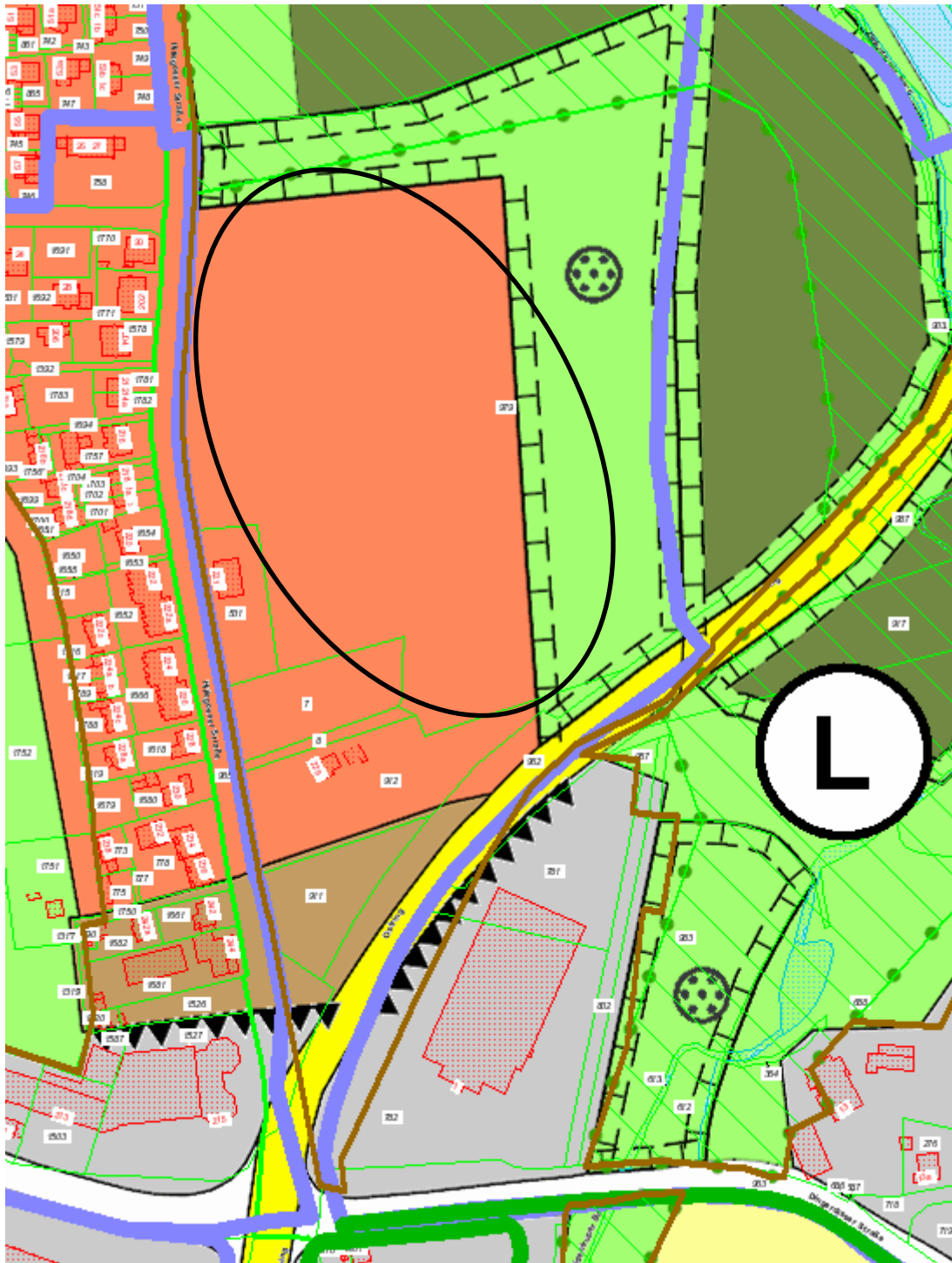
Luftbild+ALK



noch zu Nr. 26

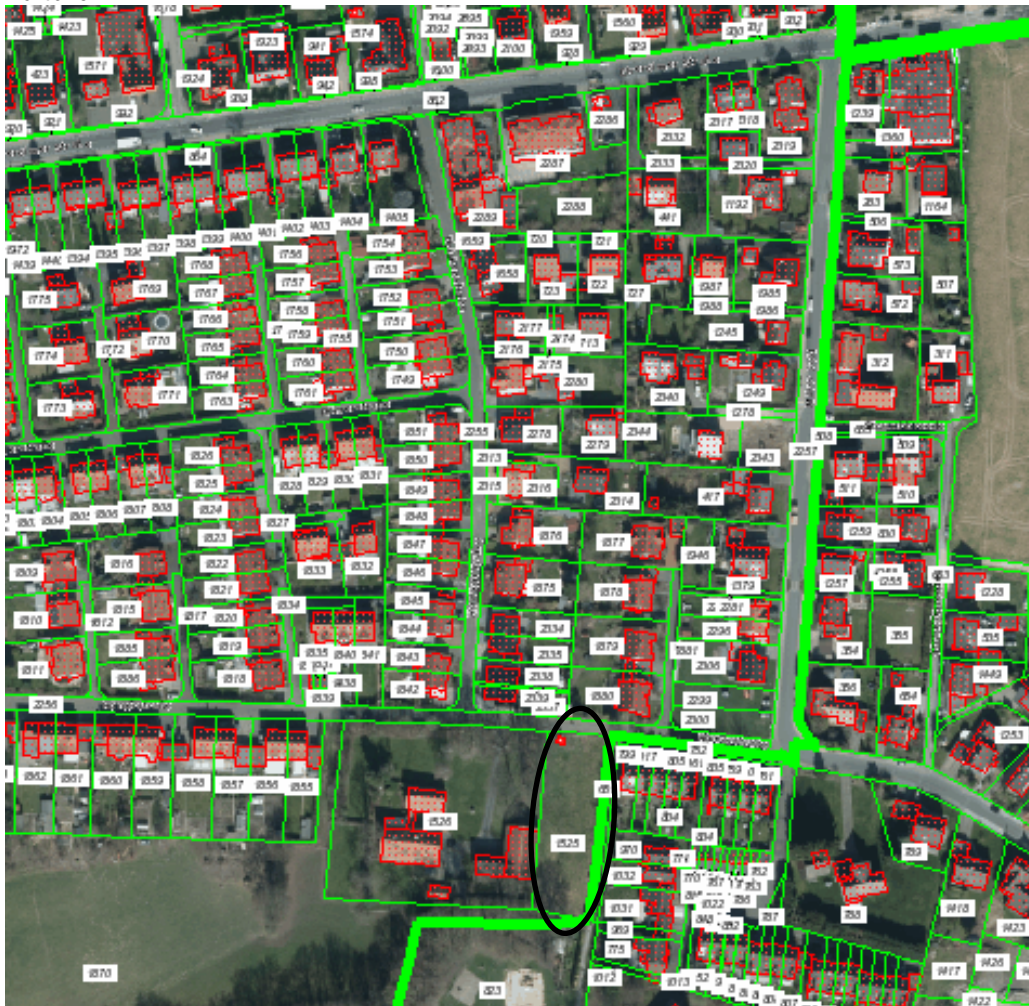
Projekt „Amerkamp“

FNP+LP+ALK

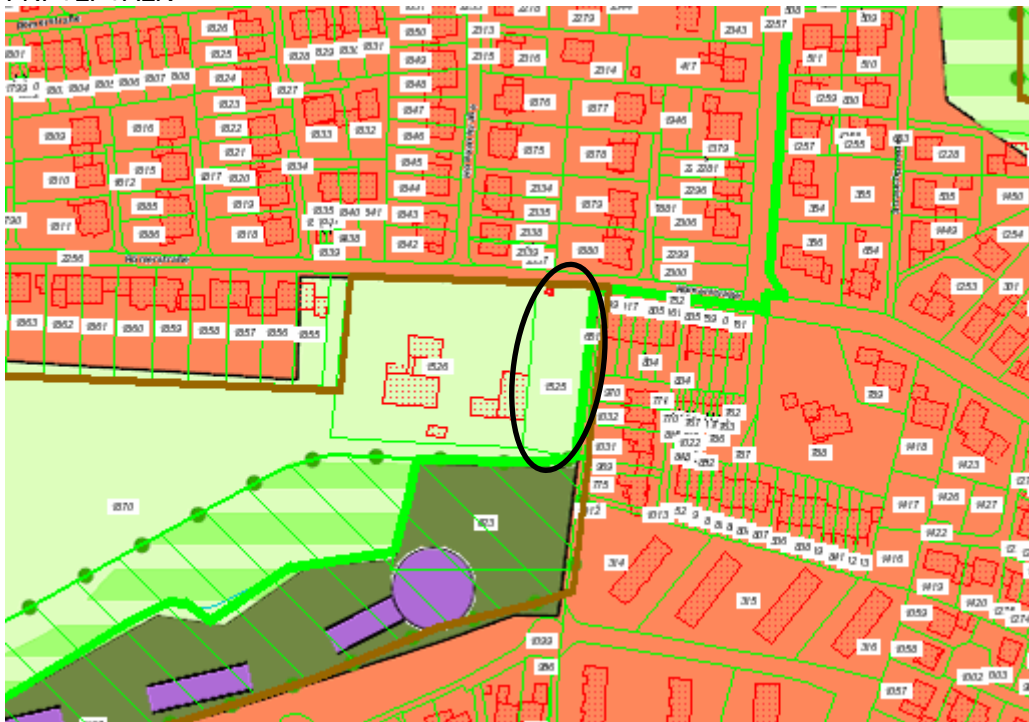


Nr. 29 Milse - Römerstraße, westlich Nr. 117, 1823 qm

Luftbild+ALK



FNP+LP+ALK

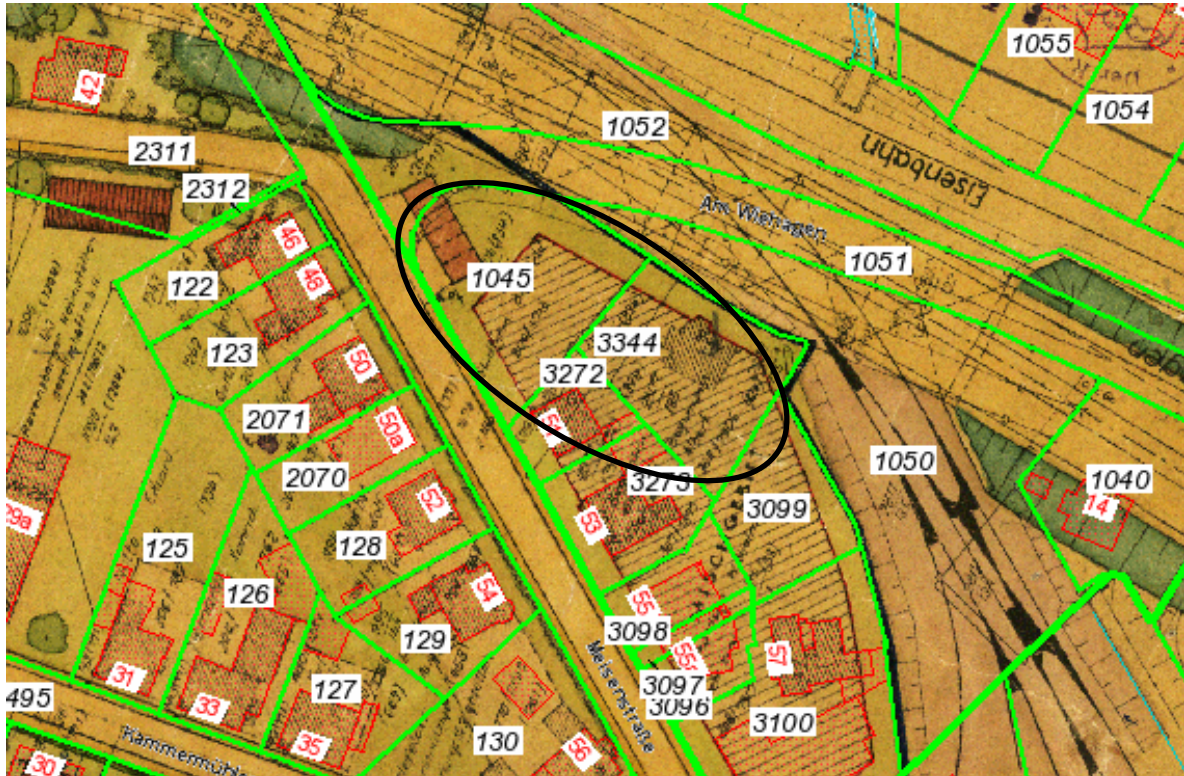


**Nr. 31 - Am Wiehagen / Ecke Meisenstr. (Gem. Bi, Flur 64, Flst. 1045 u. 3344),
insgesamt 1714 qm**

Luftbild+ALK



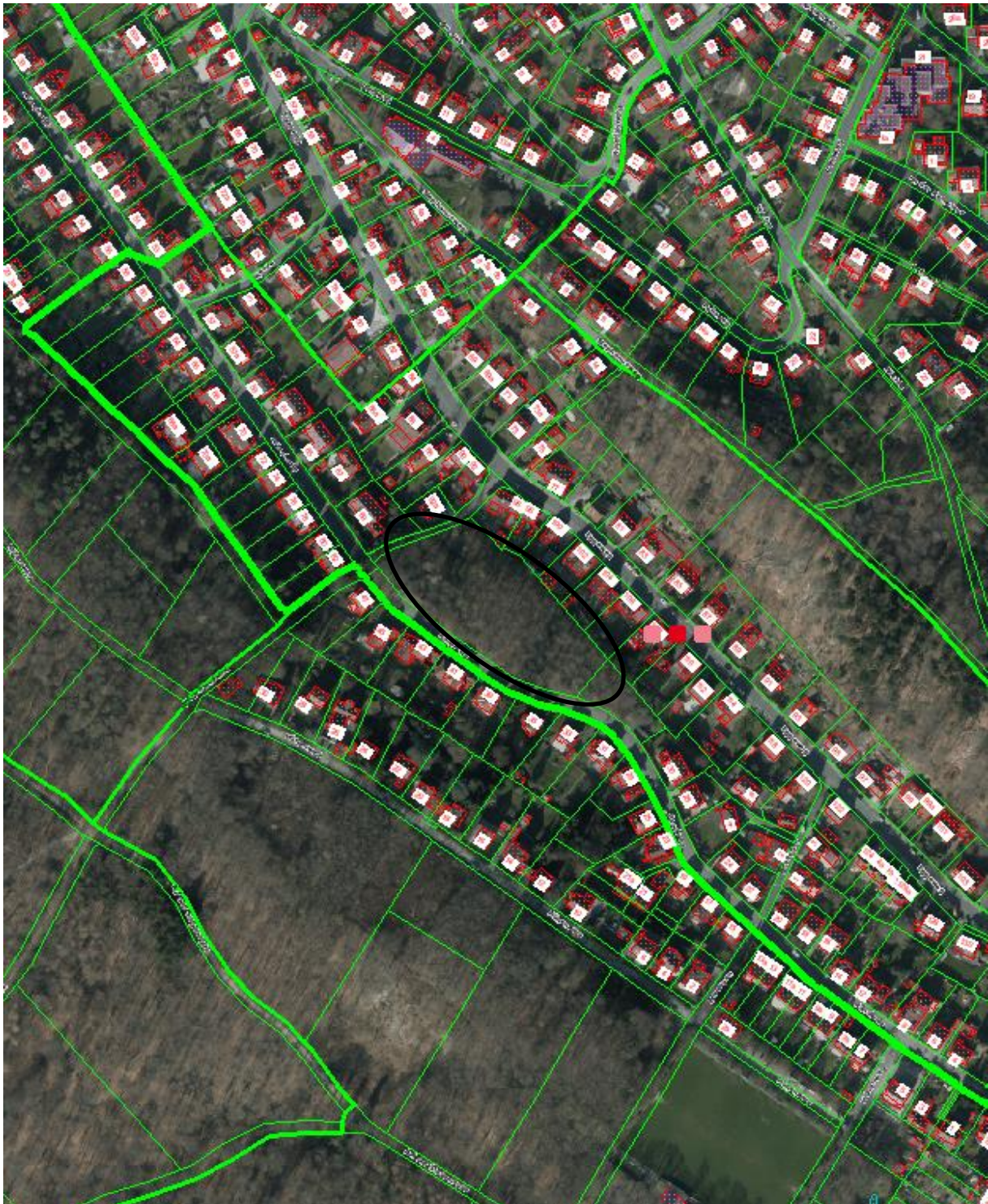
B-Plan-Ausschnitt III/3/19.00+ALK



Nr. 32 – Gadderbaum - Randweg, nördl. Nr. 35-45

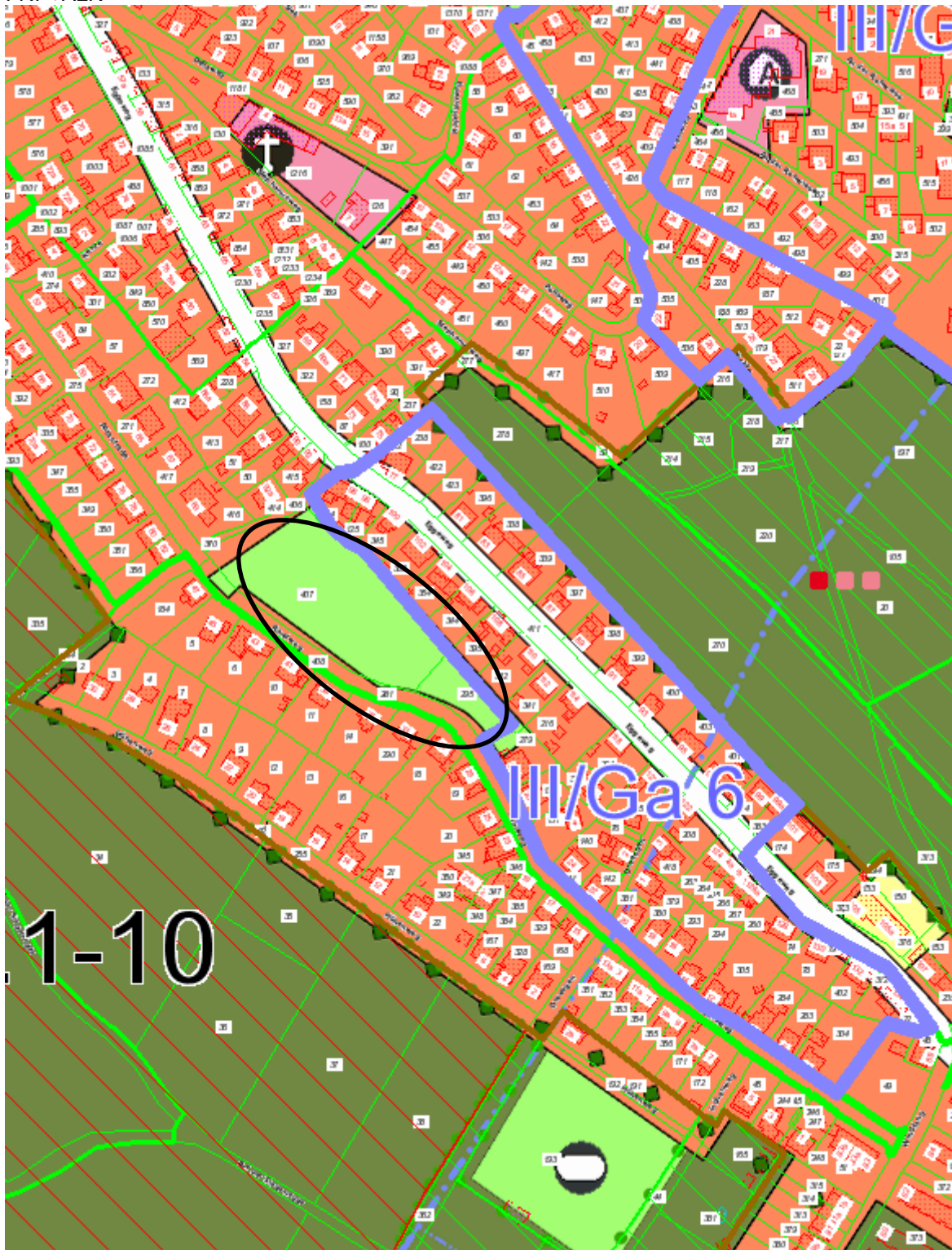
Spielplatz / bewaldete Fläche; 6212 qm

Luftbild+ALK



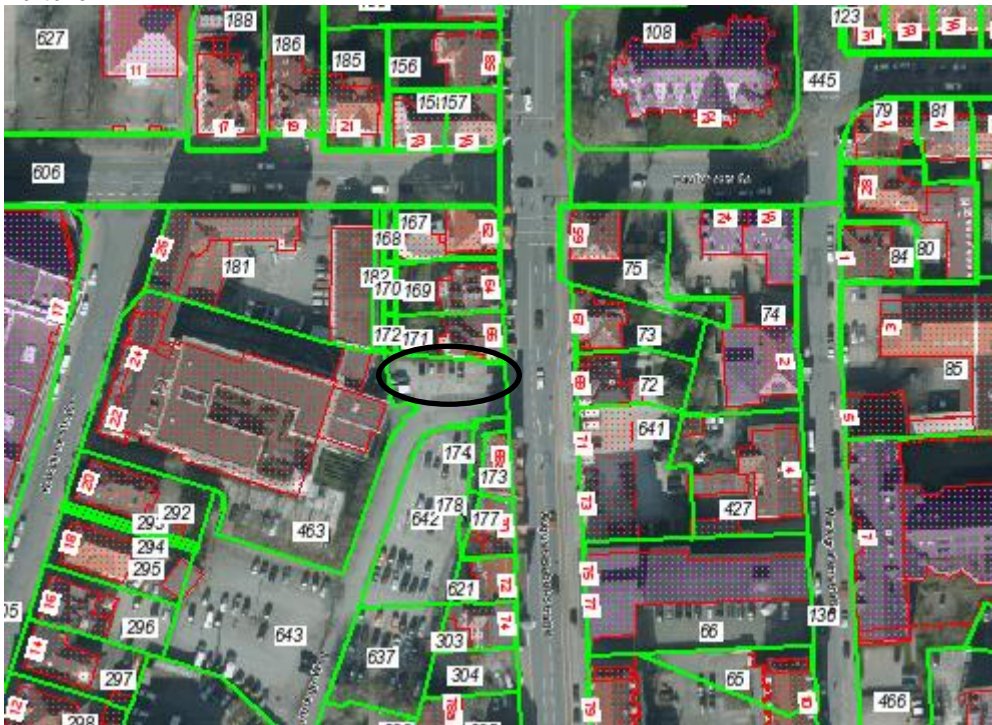
noch zu Nr. 32 Gadderbaum – Randweg

FNP+ALK

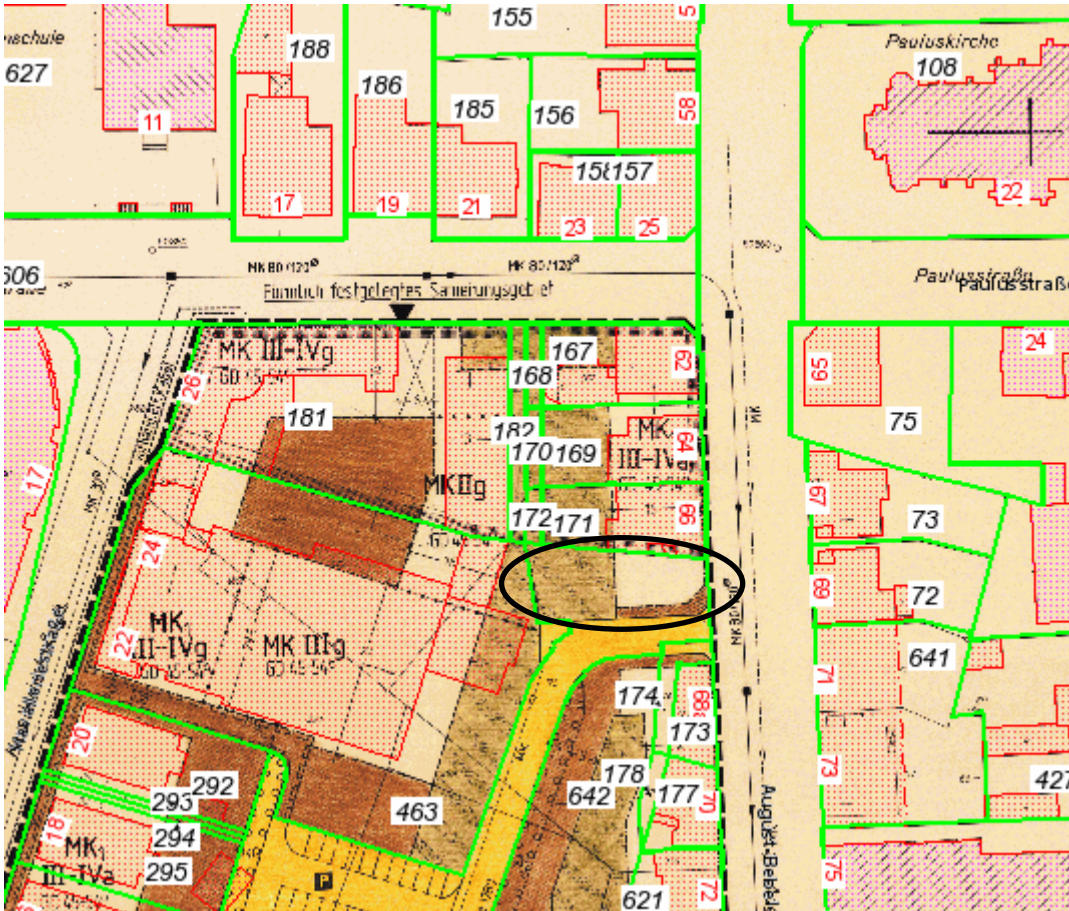


Nr. 34 Teilfläche südl. angrenzend an August-Bebel-Str. 66

Luftbild+ALK

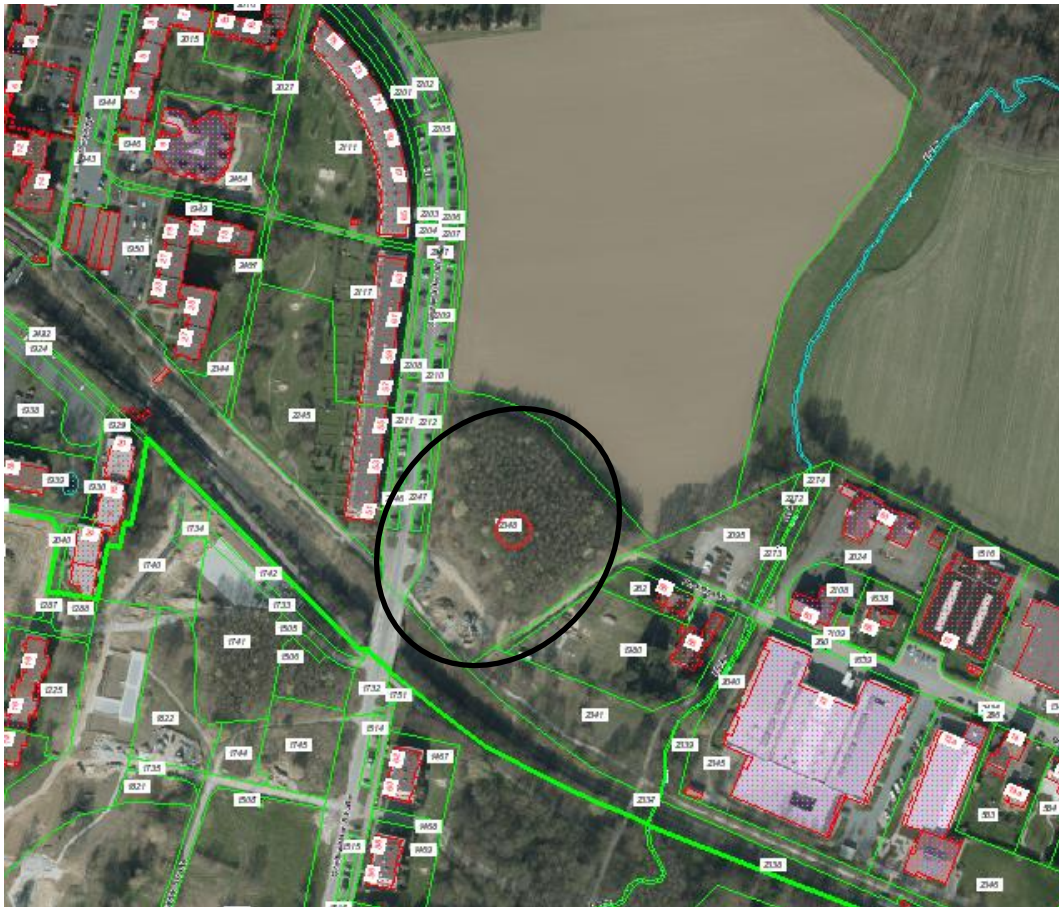


B-Plan-Ausschnitt III/3/61.00+ALK

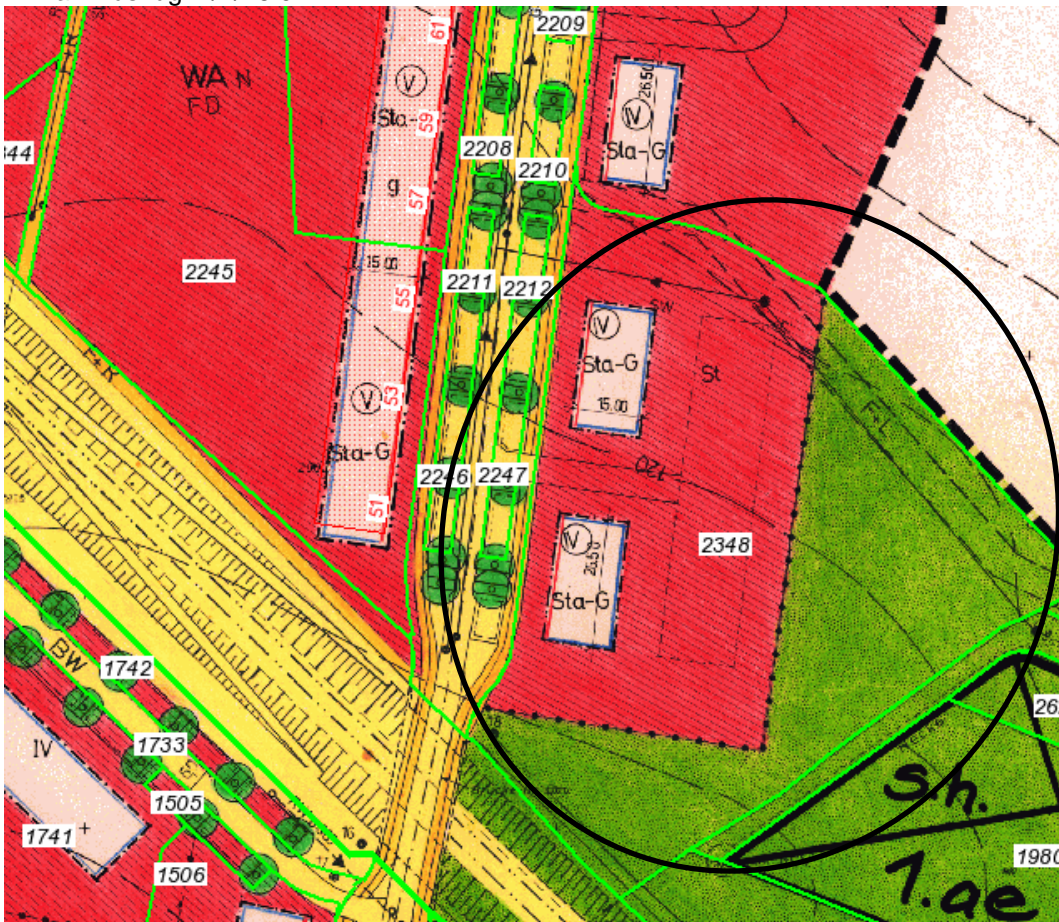


Nr. 41 Greifswalder Str. gegenüber Nrn. 51-57

Luftbild+ALK



B-Plan-Auszug III/4/46.01+ALK



Nr. 45 **Windelsbleicher-/Ecke Wittestr.**
(Teilfläche nördlich Bezirksamt Senne, ca. 2700 qm)

Luftbild+ALK



B-Plan-Ausschnitt I/S 5+ALK

